

MEMBER OF THE

**Haas**  
GROUP

# REAL & STRONG

My genuine wood floor - natural and hard-wearing



**Install it. Feel good.**

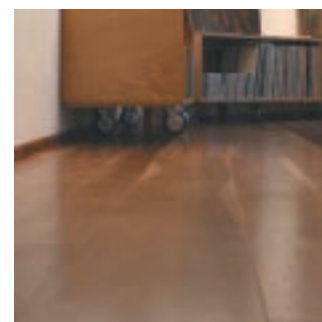
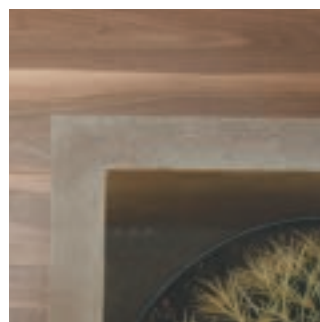
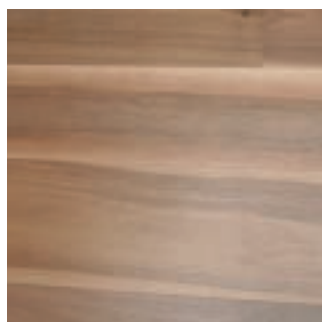


■ WOODLINK  
Cherry plank  
The BASIC COLLECTION

## A clever combination

A genuine hardwood floor guaranteed to retain its natural radiance and beauty for many years to come. Select and exquisite wood types like cherry, walnut, teak and wengé at affordable prices. A floor with a beauty that is more than skin deep – outer beauty combined with „inner values“.

WOODLINK - perfect for renovation projects thanks to low structural height. Fast and easy to install with a snug fit thanks to the special Vålinge 2 G strip-lock-system. Glue-free installation – instantly ready to walk on.



The abrasion-resistant surface made solvent-free acrylic lacquer is durable, elastic and long-wearing all at once.

A low-maintenance genuine wood floor for a healthy indoor climate and cosy natural warmth.

### GENUINE WOOD

Select high-end wood types at affordable prices

### LOW STRUCTURAL HEIGHT

Ideal for renovation projects

### EASY TO INSTALL

Snug and quick installation with Vålinge 2G strip-lock-system

### HARD-WEARING

Long-wearing and low-maintenance. Usage category 23/31 and 23/32

## The BASIC Collection

The floors of our WOODLINK BASIC Collection come from sustainable forestry.

The expressiveness of oak or the delicate elegance of walnut is enchanting to look at.

All these wood types will transmit their warmth and naturalness to your entire indoor atmosphere.



Oak plank



Beech plank



Cherry plank



Walnut plank



Oak shipsdeck



Beech shipsdeck



Cherry shipsdeck



Walnut shipsdeck



Ash shipsdeck

## The SILVER Collection

Enhance your home with rare and precious woods from our SILVER Collection.

From wengé and teak to mutenia and yatoba - these floors embody all the vivacious colours inherent in wood.

WOODLINK floors make a valuable contribution to the conservation of precious resources.



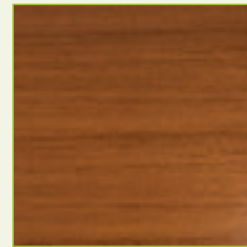
Teak plank



Wengé plank



Doussie plank



Yatoba plank



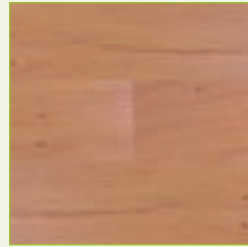
Padouk plank



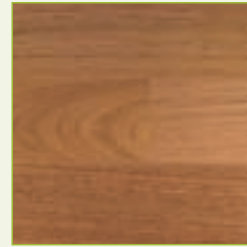
Teak shipsdeck



Wengé shipsdeck



Doussie shipsdeck

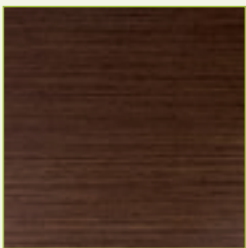


Yatoba shipsdeck

## The GOLD Collection

Extravagant and exceptional - the WOODLINK floors of our GOLD Collection.

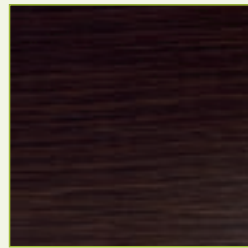
Elaborately crafted Finline veneers and architectonically sophisticated Loft finishes make for unique floor spaces way off the trodden path.



Wengé Finline



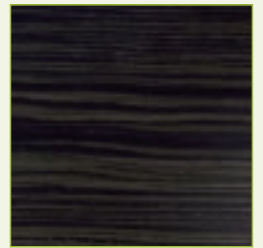
Teak Finline



Macassar Finline



Grey Oak Finline



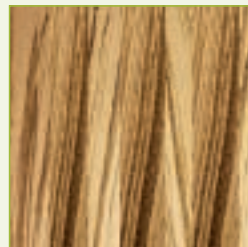
Blue Noir Finline



Walnut Loft



Oak Loft



Zebrano Loft



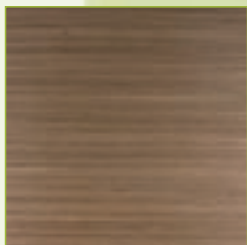
Birch shipsdeck



Mutenia plank



Oak Finline



Walnut Finline



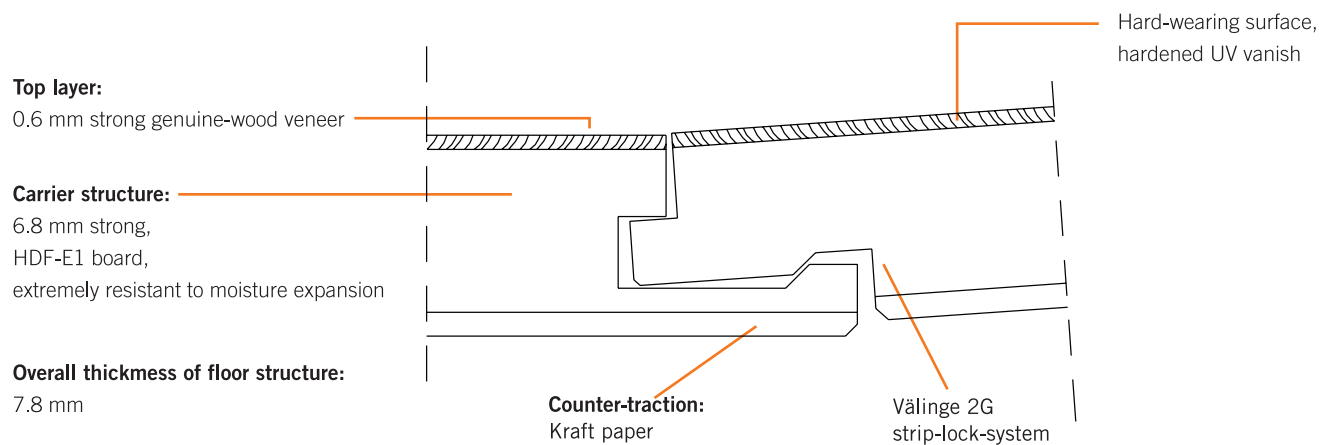
White Tiger



Zebrano plank



# THE DESIGN



## THE DESIGN

WOODLINK floors are triple-layer veneer floors with a top layer made of 0.6mm strong genuine-wood veneer.

The carrier structure in the middle is made of special HDF E1 board extremely resistant to moisture expansion. This element is 7.8mm strong.

The surface is particularly hard-wearing. The multiple UV-hardened, formaldehyde-free acrylic lacquer sealing is highly abrasion-resistant.

The delicate surface structure of this varnish-finished floor enhances the natural charm of the genuine-wood veneers while making them inured to wear and tear. The sealing makes the surface dirt-repellent and easy to clean.

## A STRONG CONNECTION

Thanks to the Vålinge 2G strip-lock-system, laying WOODLINK Genuine Wood Floors becomes easy as child's play. The self-aligning strip-lock-system guarantees perfect finished results while safely preventing installation mistakes. The individual elements connect quickly and precisely. Guaranteed instant resilience – even in the joint areas.





■ WOODLINK  
Walnut plank  
The BASIC COLLECTION

## INSTALLATION

WOODLINK has been designed for floated laying and can be installed on nearly all understructures such as e.g. cement screed, anhydrite screed or sill plates and even underfloor heating. For further detailed laying information please consult our special laying instructions contained in every package. A moisture measurement is strongly recommended to ensure a dry understructure. The understructure must also be clean and even.

## USAGE CATEGORIES

Their surface texture makes WOODLINK Genuine Wood Floors particularly sturdy and hard-wearing. They are classified under usage category 23/31 pursuant to EN 685 and are suitable for AC3-category living spaces. Special AC4-category customized designs for usage category 23/32 pursuant to EN 685 for commercial spaces are available on request.



**Living spaces**  
intense wear  
**Commercial spaces**  
moderate wear



**Living spaces**  
intense wear  
**Commercial spaces**  
regular wear

# PRICES



Size & units: 1285 x 195 x 7.8 mm - 1 package = 2 sqm (8 units) - 1 pallet = 120sqm (60 packages) - container export shipping - 1 pallet = 80sqm (40 packages)-truck shipping

## BASIC Collection

Wood type	Wood type Design	Article no.	Price per sqm
	<b>Ash</b>		
	Shipsdeck	94901016	26,73
	<b>Birch</b>		
	Shipsdeck	94901026	26,73
	<b>Beech</b>		
	Shipsdeck	94901056	26,73
	<b>Oak</b>		
	Shipsdeck	94901006	27,76
	<b>Cherry</b>		
	Shipsdeck	94901041	29,81
	<b>Walnut</b>		
	Shipsdeck	94901181	32,90
	<b>Beech</b>		
	Plank	94900056	29,81
	<b>Oak</b>		
	Plank	94900006	32,90
	<b>Cherry</b>		
	Plank	94900046	35,98
	<b>Walnut</b>		
	Plank	94900186	37,01

## SILVER Collection

Wood työe	Wood type Desing	Article no.	Price per sqm
	<b>Teak</b>		
	Shipsdeck	94901251	31,87
	<b>Doussie</b>		
	Shipsdeck	94901091	31,87
	<b>Yatoba</b>		
	Shipsdeck	94901131	31,87
	<b>Wengé</b>		
	Shipsdeck	94901121	31,87
	<b>Teak</b>		
	Plank	94900256	37,01
	<b>Doussie</b>		
	Plank	94900096	37,01
	<b>Yatoba</b>		
	Plank	94900136	37,01
	<b>Padouk</b>		
	Plank	94900316	32,90
	<b>Mutenia</b>		
	Plank	94900266	37,01
	<b>Wengé</b>		
	Plank	94900126	37,01

The prices do not include VAT



Size & units: 1285 x 195 x 7.8 mm - 1 package = 2 sqm (8 units) - 1 pallet = 120sqm (60 packages) - container export shipping - 1 pallet = 80sqm (40 packages)-truck shipping

GOLD Collection

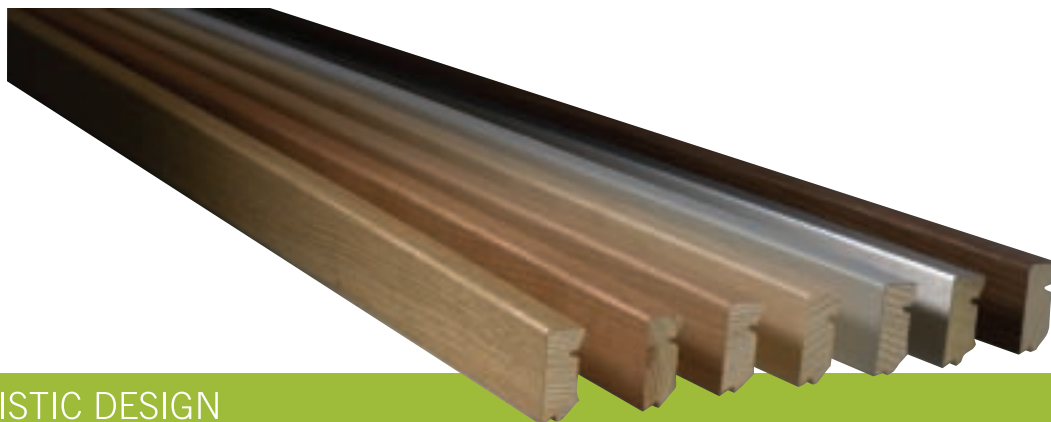
Wood type	Wood type Desing	Article no.	Price per sqm
	<b>Makassar</b> Finline	94902326	37,01
	<b>Oak</b> Finline	94902001	38,04
	<b>Grey Oak</b> Finline	94902006	39,00
	<b>Walnut</b> Finline	94902181	38,03
	<b>Wengé</b> Finline	94902126	38,03
	<b>Teak</b> Finline	94902256	37,01
	<b>Blue Noir</b> Finline	94902331	43,18
	<b>Zebrano</b> Loft	94902277	38,03
	<b>Oak</b> Loft	94902296	32,90
	<b>Walnut</b> Loft	94902306	37,01
	<b>Zebrano longitudinal</b> Plank	94900276	32,90
	<b>White Tiger</b> Plank	94900301	43,18

The prices do not include VAT

- CUBE Oak boarder
- WOODLINK  
Oak plank  
The BASIC COLLECTION



THE PERFECT TOP-OFF



PURISTIC DESIGN

CUBE borders from HOCO are a perfect blend of function and design. Their minimalist design and high-quality materials make them the perfect complement to WOODLINK Genuine Wood Floors. The profiles are available in a wide range of sizes and surface designs – from genuine wood veneers to lacquer finishes in RAL shades all the way to stainless-steel surfaces.



CUBE 630 UM  
Measurements: 16 x 40 mm



CUBE 631 UM  
Measurements: 16 x 58 mm



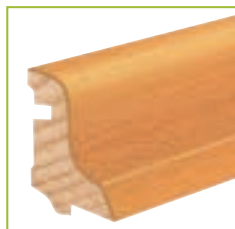
CUBE 632 UM  
Measurements: 16 x 78 mm



HOCO functional borders allow the installation of a variety of different profiles without any screws visible on the surface. The functional borders are simply screwed, glued or nailed to the wall.

In addition to their aesthetic appeal, these profiles offer a whole range of technical benefits such as e.g. improved noise protection, improved moisture protection, and improved dust protection. Naturally, HOCO design borders can be custom-finished in any RAL shade of your choice. Colour matching, e.g. with walls or room elements, is also possible.

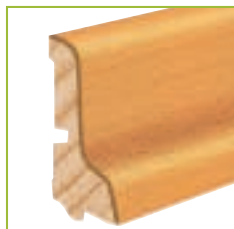
ADDITIONAL HOCO BORDER DESIGNS



550 UM



551



552 UM



553 UM



554 UM



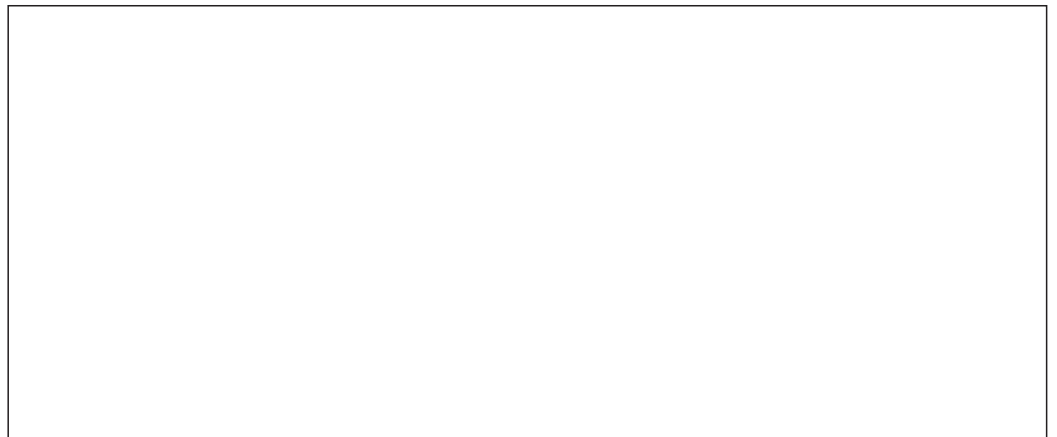
555 UM



■ WOODLINK  
Wengé shipsdeck  
The SILVER COLLECTION

## WOODLINK - The Aesthetic Synergy of Design and Technology

For further information please contact **HOCO Hofstetter & Co. Holzindustrie GmbH**,  
Landshuter Str. 91, D-84307 Eggenfelden, [holz@hoco.de](mailto:holz@hoco.de), [www.hoco.de](http://www.hoco.de) or your HOCO specialist retailer:



**Install it. Feel good.**